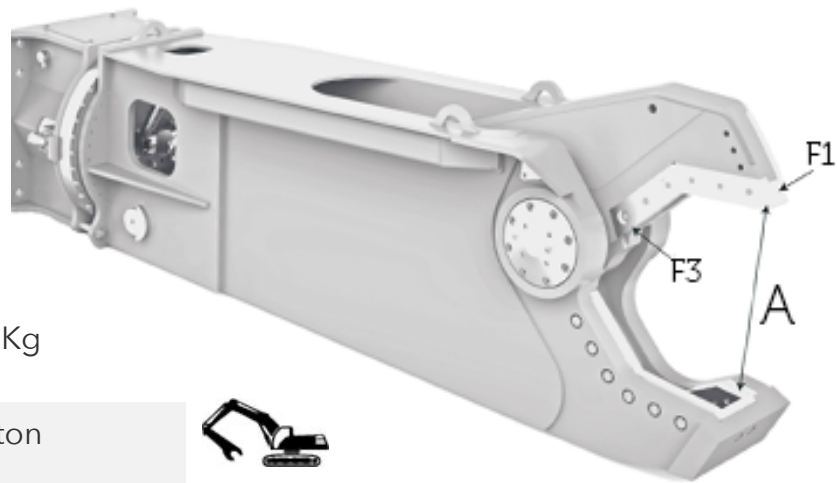


SC130

SC series



Technical Specification



Shear weight 315 Kg

Carrier's weight (Stick) 2/5 ton

Carrier's weight (Boom) 1/4 ton

Max jaws opening (A) 275 mm

Rotation oil flow (min/max) 4/5 l/min

Rotation pressure 120 bar

Opening/closing oil flow 60/100 l/min

Opening/closing oil pressure 200/250 bar

Throat force (F3) 85 ton

Tip force (F1) 28 ton

Rotation 360° Hydraulic

CUTTING DATA

I 80 mm

II 60 mm

III 30 mm