

MH1200 Series

Material Handling Solutions

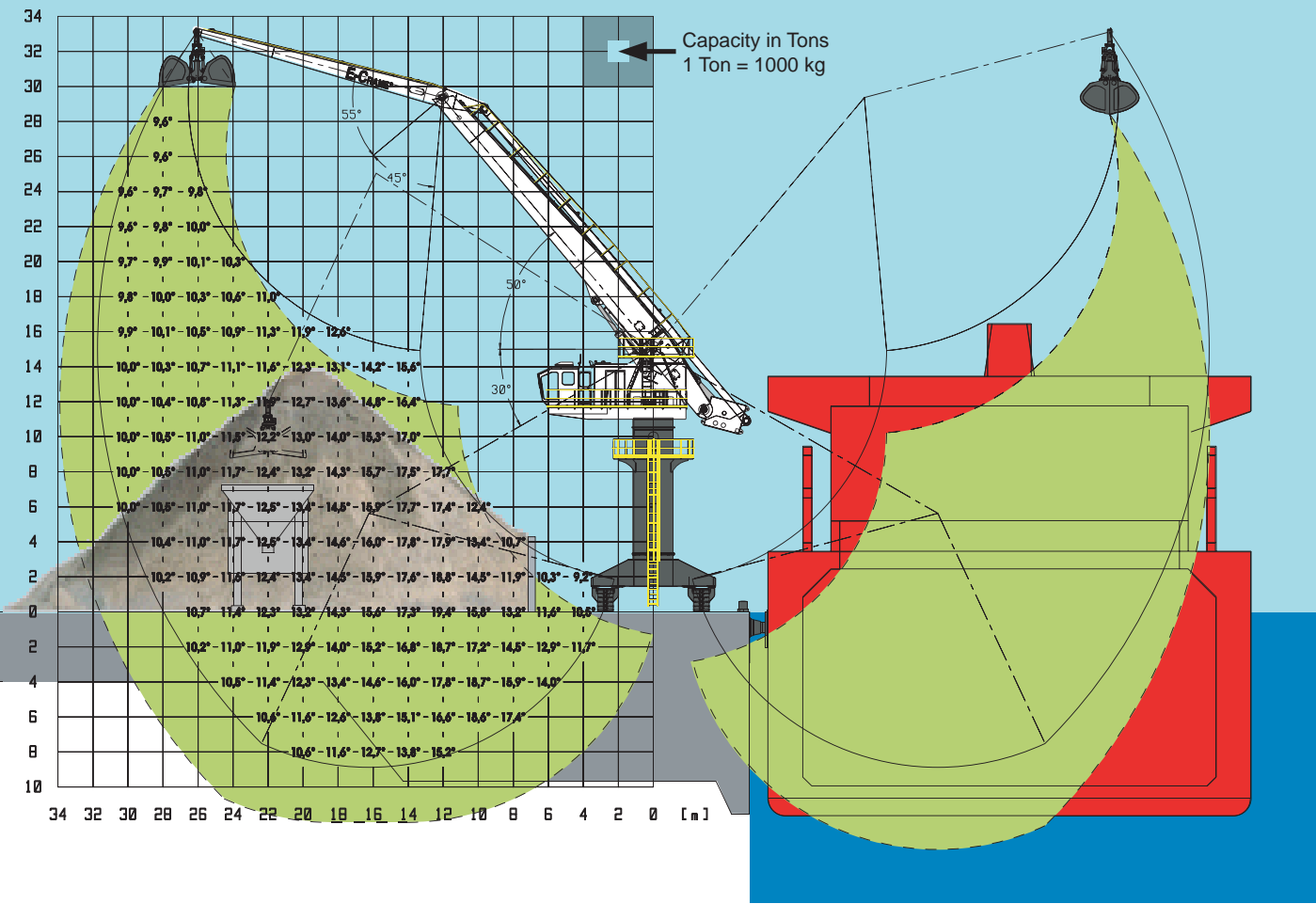
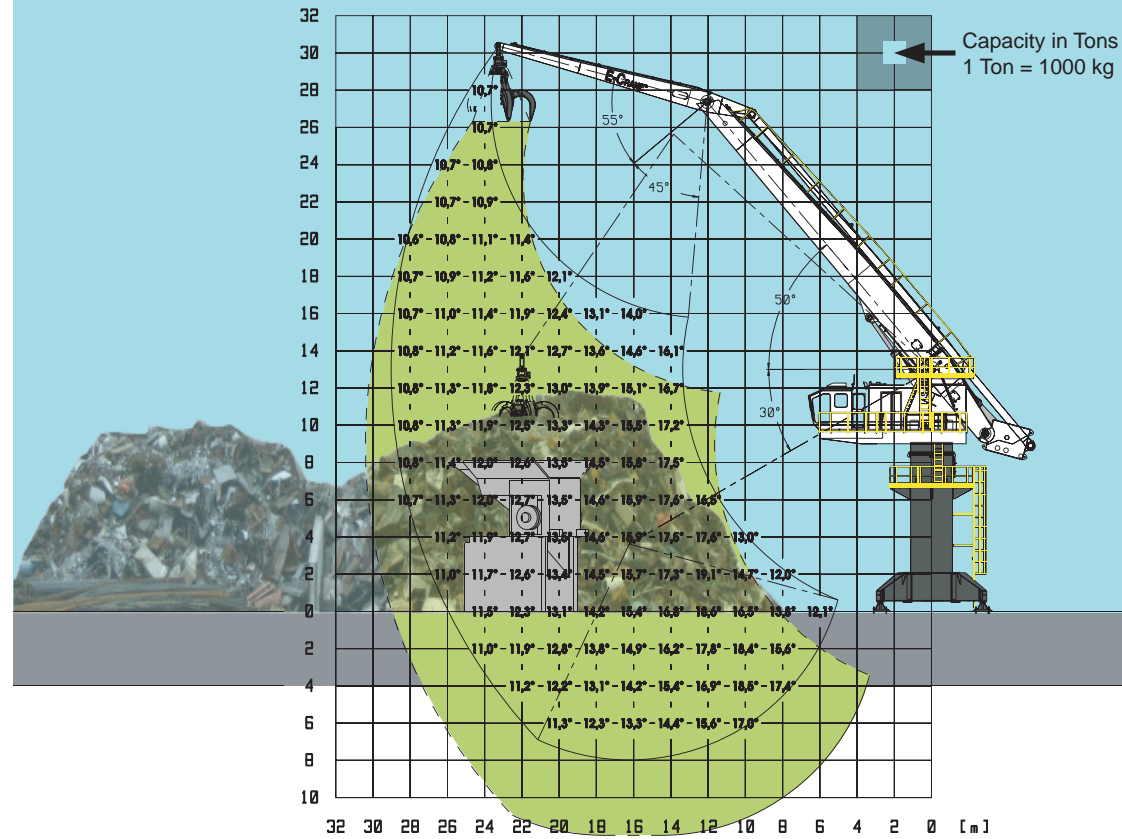


140 - 175 Ton



160 kW / 200 hp





TECHNICAL DATA

Typical Dimensions

Stick length: 11,6m
 Boom length: 18,75m
 Main Pivot Point (above GND): 13m
 Max. Outreach: 29,050m
 Downreach Range (below GND): 7,975m
 Lift Range (Vertical): 30,366m

Weight

Total Weight with Standard Equipment:

Model MH11290PD-E: 138.500 kg
 Model MH11290CR-D: 166.500 kg

Installed Power

Main Electrical Motor: 160 kW
 Diesel Generator Set: 360 kVA
 (for Crawler mounted Material Handlers only)



TECHNICAL DATA

Typical Dimensions

Stick length: 14,5m
 Boom length: 18,75m
 Main Pivot Point (above GND): 15m
 Max. Outreach: 31,737m
 Downreach Range (below GND): 8,875m
 Lift Range (Vertical): 33,116m

Weight

Total Weight with Standard Equipment:

Model MH10317PD-E: 144.500 kg
 Model MH10317CR-D: 173.000 kg

Installed Power

Main Electrical Motor: 160 kW
 Diesel Generator Set: 360 kVA
 (for Crawler mounted Material Handlers only)



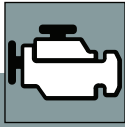
Technical Data



E lectric Motor

The clean power solution.

Rating _____ 160 kW @ 1.500 rpm (400VAC/50Hz)
 Type _____ Squirrel Cage Electric Motor
 Starting Method _____ Soft Starter



Diesel Generator Set

For crawler mounted Material Handlers only.

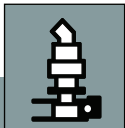
Rating _____ 288 kW
 Fuel Consumption _____ 39 l/hr



Hydraulics

Powerful hydraulics to maximize performance.

Main Pump _____ 2x Variable Displacement Axial Piston Pump
 Maximum Flow _____ 2x 400 l/min.
 Maximum Pressure _____ 320 bar
 Swing Pump _____ Variable Displacement Axial Piston Pump, Closed-loop
 Maximum Flow _____ 245 l/min.
 Maximum Pressure _____ 280 bar
 Pilot Pump _____ Gear Pump
 Capacity Hydraulic Tank _____ 1.850 l
 Hydraulic Cylinders _____ 2 Identical Cylinders with Safety Valves (Load Holding Valves)
 Boom & Stick Cylinder _____ 1800 x 279 x 178 mm
 Oil Cooler _____ Electric Driven, oversized air-oil cooler
 Hydraulic Controls _____ The high pressure flow sharing control valves provide a load pressure independent flow distribution and are pilot operated for low lever efforts and excellent control.
 Relief Valves _____ All lines include primary and secondary relief valves.
 Filtration _____ For extended operating life of your Material Handler.
 Pilot Oil Filtration _____ 5 microns
 Return Oil Filtration _____ 20 microns
 Bypass Filtration _____ 10 microns
 Water Separator _____ Standard



Swing System

Quick, full-powered response.

Mechanism _____ Hydrostatic with planetary reduction
 Swing Drives _____ 2
 Swing Torque _____ 460 kNm
 Swing Speed _____ 0 - 2,24 rpm
 Parking Brake _____ Spring-applied, hydraulically released, multiple-disc brake
 Slewing Ring _____ Three-Row Roller Bearing with Internal Gear



Upper Revolving Frame

The "Backbone" of the machine's durability.

Design _____ Rugged box section construction
 Platforms _____ Wide, walk-around access to all system components for easy serviceability and quick daily maintenance checks.

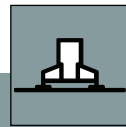
Contact your local dealer for more info



XL Cab

Designed for comfort and ease of operation.

Operator's Station _____ Extra height and length for increased operator space.
 LxWxH _____ 2.000 x 1.800 x 2.200 mm
 Operator's Seat _____ Fully adjustable suspension seat includes height and weight adjustments, lumbar support, wide adjustable armrests,...
 Hydraulic Activation Control Lever _____ Lever deactivates hydraulic functions and helps prevent operation when the operator exits the cab.
 Air Conditioning _____ Standard
 Radio / CD Player _____ Standard
 Controls _____ CAN-based Electronic Machine Manager (EMM). A Full color LCD screen provides the operator with E-Crane operating status, safety systems and records all relevant events during operations.

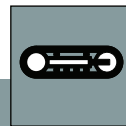


Free Standing Pedestal

... offering the most economical solution.

Outriggers _____ 4
 Footprint _____ 6 m x 6 m
 Pedestal Height and Weight

MH11290 PDE _____ 8.600 mm - 24.500 kg
 MH10317 PDE _____ 10.600 mm - 26.500 kg

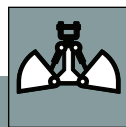


Crawler Undercarriage

Durable, maintenance-free and providing excellent stability.

Center and Track Frame _____ Box-section type
 Drive System _____ Hydrostatic
 Max. Drawbar Pull _____ 430 kN
 Track Shoes _____ 900 mm Triple Grouser
 No. of Shoes each side _____ 54
 No. of Carrier Rollers each side _____ 4
 No. of Track Rollers each side _____ 12
 Track Length (C-C) _____ 5.540 mm
 Track Gauge _____ 5.500 mm
 Undercarriage Height and Weight

MH11290 PDE _____ 8.600 mm - 52.500 kg
 MH10317 PDE _____ 10.600 mm - 55.000 kg



Attachments

The right tool for the right job.

E-Crane® offers a wide variety of attachments: clamshell and orange peel grabs, hooks, grab rotators, quick change devices,...

**..., Longer Reach,
 Higher Efficiency,
 Unprecedented Life.**

E-Crane International USA
 Phone: +1(419)468-0090
 Web: <http://www.e-crane-usa.com>

E-Crane International Europe
 Phone: +31(0)165-320100
 Web: <http://www.e-crane.eu>

©2009 E-Crane Worldwide / Indusign. All rights reserved. All technical specifications are subject to change without prior notice and without incurring responsibility for material handlers previously sold! Changes, errors and misprints reserved.

E-CRANE MH1200 Series
 Material Handling Solutions